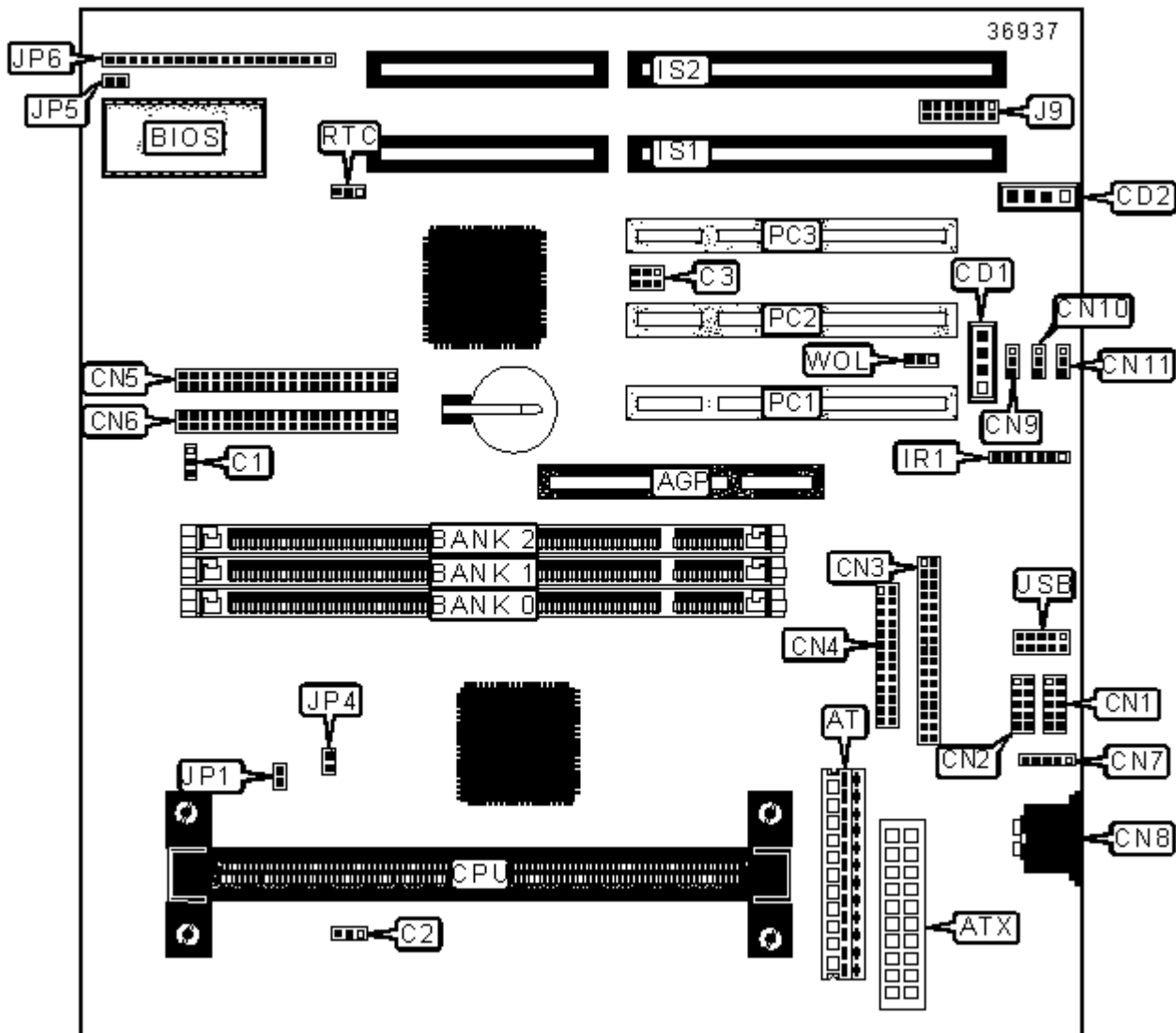


# BOARDRUNNER

6BX2 (VER. 1.0)

<b>Device Type</b>	Mainboard
<b>Processor</b>	Pentium II/Celeron
<b>Processor Speed</b>	200/233/266/300/333/350/400/450/500MHz
<b>Chip Set</b>	Intel 440BX
<b>Audio Chip Set</b>	ESS
<b>Maximum Onboard Memory</b>	768MB (EDO & SDRAM supported)
<b>Maximum Audio Memory</b>	Unidentified
<b>Cache</b>	0/128/256/512KB (located on the CPU)
<b>BIOS</b>	Award
<b>Dimensions</b>	220mm x 220mm
<b>I/O Options</b>	16-bit ISA slots (2), 32-bit PCI slots (3), floppy drive interface, game interface, green PC connector, IDE interfaces (2), parallel interface, PS/2 mouse interface, serial interfaces (2), IR connector, USB interface, ATX power connector, AT power connector, AT keyboard connector, AGP slot, line in interface, line out interface, microphone in interface, audio in - CD-ROMs (2), SB-link connector, wake on LAN connector



<b>Purpose</b>	<b>Location</b>	<b>Purpose</b>	<b>Location</b>
AGP slot	AGP	Microphone in interface	CN10
AT power connector	AT	Line out interface	CN11
ATX power connector	ATX	IR connector	IR1
Chassis fan power	C1	16-bit ISA slots	IS1-IS2
Chassis fan power	C2	Game interface	J9
SB-link connector	C3	CPU temperature sensor	JP4
Audio in - CD-ROM 1	CD1	Soft off power supply	JP5
Audio in - CD-ROM 2	CD2	Power LED & keylock	JP6/pins 1 – 5
Serial interface 2	CN1	Speaker	JP6/pins 7 – 10
Serial interface 1	CN2	Reset switch	JP6/pins 12 & 13
Floppy drive interface	CN3	IDE interface LED	JP6/pins 15 & 16
Parallel interface	CN4	Turbo LED	JP6/pins 18 & 19
IDE interface 2	CN5	Green PC connector	JP6/pins 21 & 22
IDE interface 1	CN6	32-bit PCI slots	PC1 – PC3
PS/2 mouse interface	CN7	USB interface	USB
AT keyboard connector	CN8	Wake-on-LAN connector	WOL
Line in interface	CN9		

### USER CONFIGURABLE SETTINGS

<b>Function</b>		<b>Label</b>	<b>Position</b>
»	Factory configured - do not alter	JP1	Closed
»	CMOS memory normal operation	RTC	Pins 1 & 2 closed
	CMOS memory clear	RTC	Pins 2 & 3 closed

### DIMM CONFIGURATION

<b>Size</b>	<b>Bank 0</b>	<b>Bank 1</b>	<b>Bank 2</b>
8MB	(1) 1M x 64	None	None
16MB	(1) 1M x 64	(1) 1M x 64	None

16MB	(1) 2M x 64	None	None
24MB	(1) 1M x 64	(1) 1M x 64	(1) 1M x 64
32MB	(1) 2M x 64	(1) 2M x 64	None
32MB	(1) 4M x 64	None	None
32MB	(1) 2M x 64	(1) 1M x 64	(1) 1M x 64
48MB	(1) 2M x 64	(1) 2M x 64	(1) 2M x 64
48MB	(1) 4M x 64	(1) 1M x 64	(1) 1M x 64
64MB	(1) 4M x 64	(1) 4M x 64	None
64MB	(1) 8M x 64	None	None
64MB	(1) 4M x 64	(1) 2M x 64	(1) 2M x 64
80MB	(1) 8M x 64	(1) 1M x 64	(1) 1M x 64
96MB	(1) 4M x 64	(1) 4M x 64	(1) 4M x 64
96MB	(1) 8M x 64	(1) 2M x 64	(1) 2M x 64
128MB	(1) 8M x 64	(1) 8M x 64	None
128MB	(1) 16M x 64	None	None
128MB	(1) 8M x 64	(1) 4M x 64	(1) 4M x 64
144MB	(1) 16M x 64	(1) 1M x 64	(1) 1M x 64
160MB	(1) 16M x 64	(1) 2M x 64	(1) 2M x 64
192MB	(1) 8M x 64	(1) 8M x 64	(1) 8M x 64
192MB	(1) 16M x 64	(1) 4M x 64	(1) 4M x 64
256MB	(1) 16M x 64	(1) 16M x 64	None
256MB	(1) 32M x 64	None	None
256MB	(1) 16M x 64	(1) 8M x 64	(1) 8M x 64
272MB	(1) 32M x 64	(1) 1M x 64	(1) 1M x 64
288MB	(1) 32M x 64	(1) 2M x 64	(1) 2M x 64
320MB	(1) 32M x 64	(1) 4M x 64	(1) 4M x 64
384MB	(1) 16M x 64	(1) 16M x 64	(1) 16M x 64
384MB	(1) 32M x 64	(1) 8M x 64	(1) 8M x 64
512MB	(1) 32M x 64	(1) 32M x 64	None

512MB	(1) 32M x 64	(1) 16M x 64	(1) 16M x 64
768MB	(1) 32M x 64	(1) 32M x 64	(1) 32M x 64
Note: Board supports EDO & SDRAM memory.			

### CACHE CONFIGURATION

Note: 256KB/512KB cache is located on the Pentium II CPUs. 128KB cache is located on the Celeron 300A and greater CPUs..