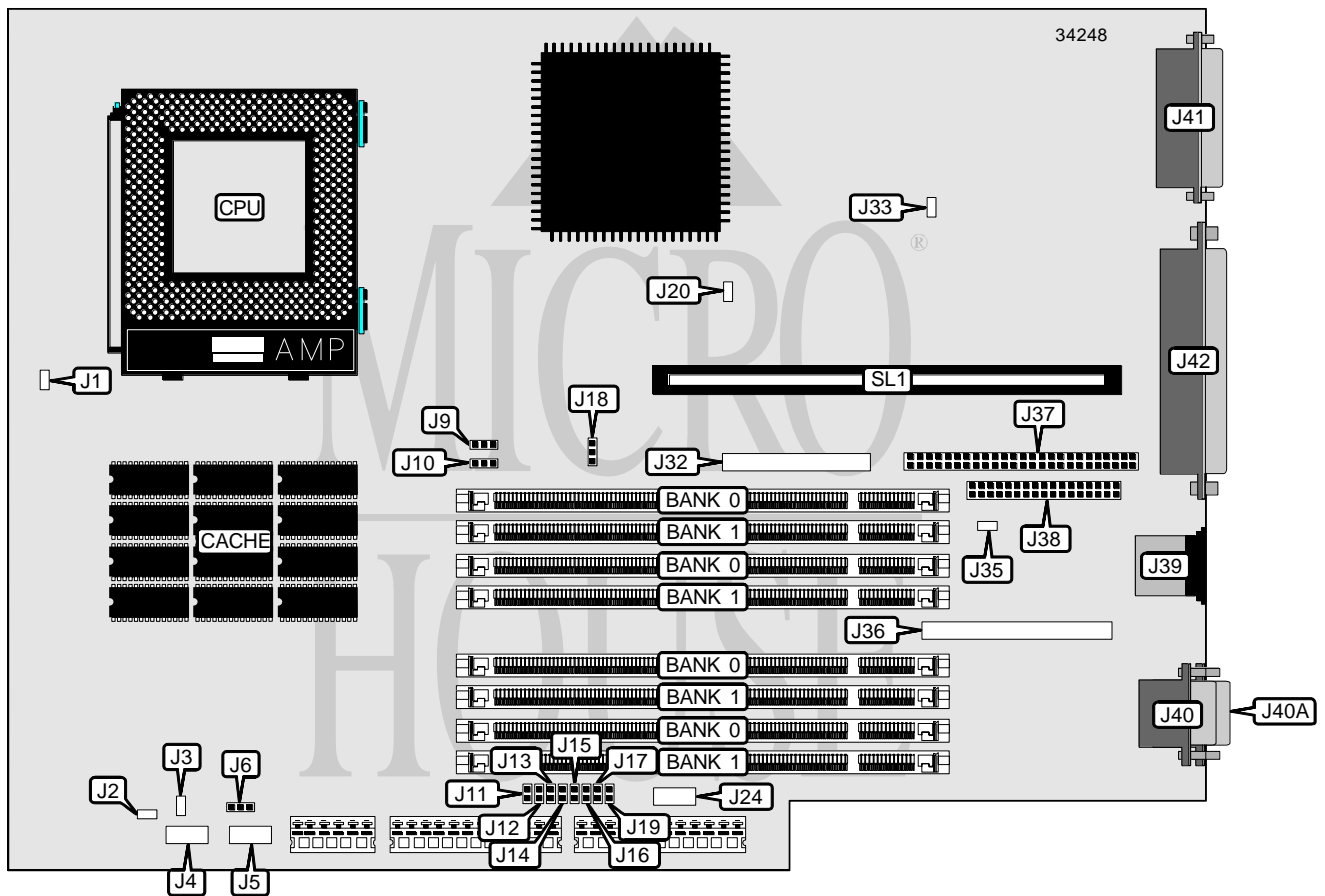


# DIGITAL EQUIPMENT CORPORATION ALPHASTATION 500

<b>Processor</b>	Alpha
<b>Processor Speed</b>	266/300/333MHz
<b>Chip Set</b>	DEC
<b>Video Chip Set</b>	None
<b>Maximum Onboard Memory</b>	512MB
<b>Maximum Video Memory</b>	None
<b>Cache</b>	2MB
<b>BIOS</b>	Unidentified
<b>Dimensions</b>	330mm x 218mm
<b>I/O Options</b>	Floppy drive interface, SCSI interface, external SCSI connector, parallel port, PS/2 mouse port, serial ports (2), riser slot, audio card connector, media adapter unit connector, SROM port
<b>NPU Options</b>	None



Continued on next page . . .

# DIGITAL EQUIPMENT CORPORATION

## ALPHASTATION 500

... continued from previous page

CONNECTIONS			
Purpose	Location	Purpose	Location
Chassis fan power	J1	Floppy drive interface	J38
Cache fan connector	J3	PS/2 mouse port	J39
Diagnostic port	J4	Serial port 1	J40
Front panel connector	J5	Serial port 2	J40A
SROM port	J24	Parallel port	J41
Media adapter unit connector	J32	External SCSI connector	J42
Audio card connector	J36	Riser slot	SL1
SCSI interface	J37		

USER CONFIGURABLE SETTINGS		
Function	Label	Position
í Factory configured - do not alter	J2	Unidentified
í Front panel button set as reset switch	J6	Pins 1 & 2 closed
Front panel button set as halt switch	J6	Pins 2 & 3 closed
í Secure console disabled	J9	Pins 2 & 3 closed
Secure console enabled	J9	Pins 1 & 2 closed
í Primary console enabled	J10	Pins 2 & 3 closed
Alternate console enabled	J10	Pins 1 & 2 closed
í Factory configured - do not alter	J15	Unidentified
í Factory configured - do not alter	J16	Unidentified
í Flash BIOS write protect disabled	J18	Pins 2 & 3 closed
Flash BIOS write protect enabled	J18	Pins 1 & 2 closed
í Factory configured - do not alter	J20	Unidentified
í Factory configured - do not alter	J33	Unidentified
í Factory configured - do not alter	J35	Unidentified

DIMM CONFIGURATION		
Size	Bank 0	Bank 1
32MB	(4) 1M x 64	None
64MB	(4) 2M x 64	None
128MB	(4) 4M x 64	None
256MB	(4) 8M x 64	None
64MB	(4) 1M x 64	(4) 1M x 64
96MB	(4) 2M x 64	(4) 1M x 64
160MB	(4) 4M x 64	(4) 1M x 64
288MB	(4) 8M x 64	(4) 1M x 64
128MB	(4) 2M x 64	(4) 2M x 64
192MB	(4) 4M x 64	(4) 2M x 64
320MB	(4) 8M x 64	(4) 2M x 64
256MB	(4) 4M x 64	(4) 4M x 64
384MB	(4) 8M x 64	(4) 4M x 64
512MB	(4) 8M x 64	(4) 8M x 64

Continued on next page...

